



COMPANY PROFILE 2024





EXCELLENCE IN PEOPLE

We're not
scientists,
but we total
got space.

Expand your business.
ManhattanMiniStorage.com

manhattan
mini storage

SPEED
LIMIT
40



BINAWAN GROUP

Binawan group is the pioneer of Indonesian manpower development and international placement with a holistic ecosystem focused on upgrading its education and skill sets to meet the needs of global standards.

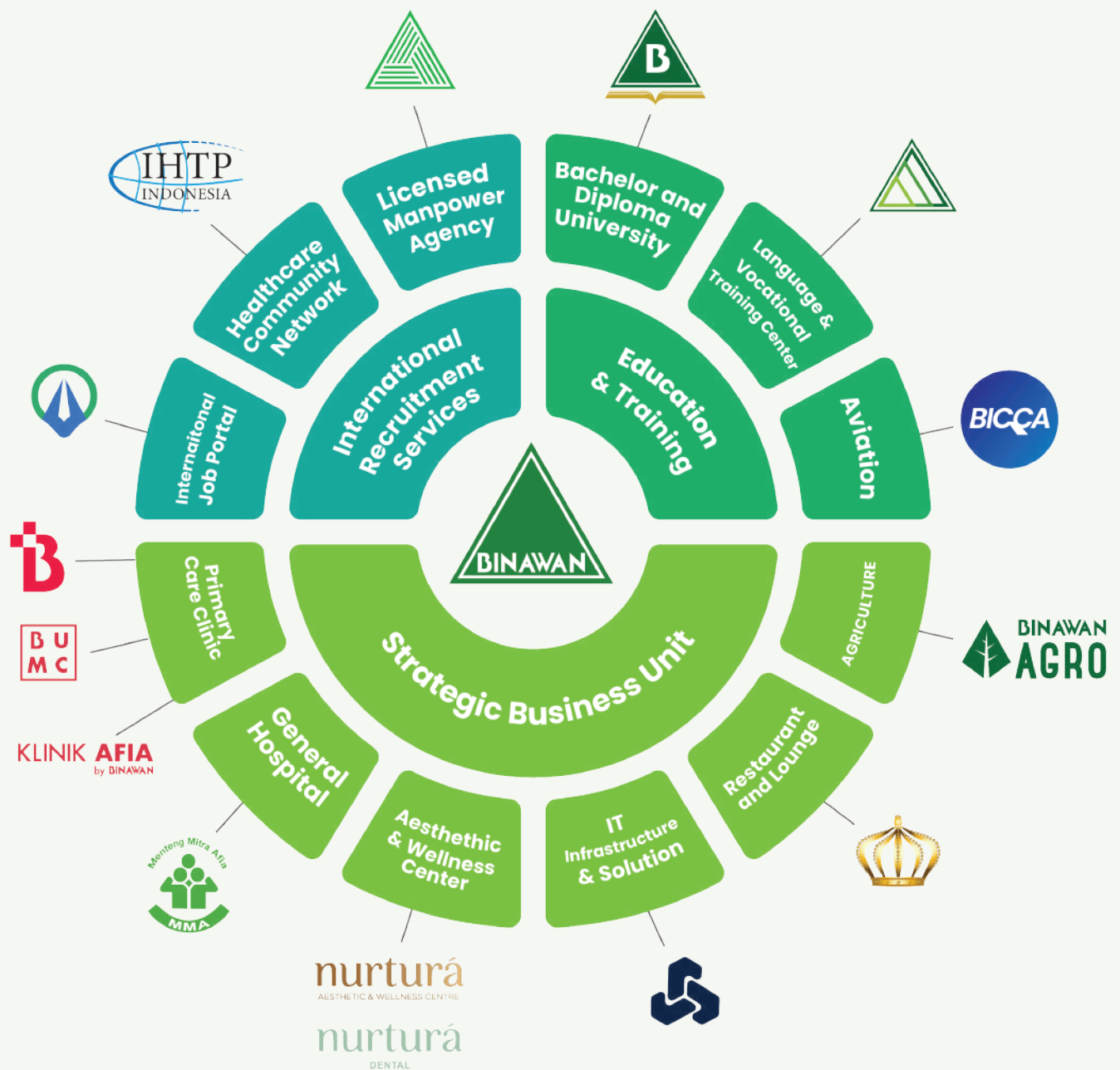
Binawan Group has been focusing on creating an ecosystem that develops Indonesian manpower to be able to be recognized as equals in the global stage - through **education, skills enhancement, cultural immersion, global networking, work experience, International job and internship placements** - for over 40 years. Capturing Indonesia's demography, an oversupply of manpower in various sectors is a challenge for the country that potentially solve the issue of global workforce shortage.

Binawan's founder, Mr. Saleh Saeed Alwaini, managed to observe these issues and came up with a master plan to bridge the skill gap and narrow the divide between Indonesian and global workforce. Through our innovative programs and ecosystem, we empower Indonesian professionals to become competitive and contribute effectively on a global scale. Our ecosystem is fully prepared to offer education, cutting-edge training, development opportunities, and cross-cultural experiences to equip our talents with the skills, knowledge, and cultural fluency needed for them to excel in International settings.

**Bridging
The Gap between
Indonesian And
Global Workforce**

>100,000
Manpower international
placements for over
40 years

BINAWAN GROUP ECOSYSTEM



Indonesia at A Glance

Indonesia is the 4th most populous country in the world with a population reaching more than 275 million people. Indonesia is currently entering the bonus demographic era, with 70% of the population (190 million people) belonging to the Productive Age category. This presents a unique opportunity for its population to excel in working abroad.*



Indonesian society is culturally diverse that fosters adaptability and intercultural skills, allowing them to work effectively in multicultural environments and connect with people from different backgrounds. They are also known for their exemplary work attitude and politeness with strong work ethics and determination -- they are often willing to go extra mile, work dilligently, and continuously improve their skills, which are the most cited attributes requested by prospective employers.

With increasing education quality, English proficiency, and technological penetration, the population is rapidly becoming an integral part of the global community. By equipping them with the appropriate skill-set and upgrading their competencies to suit the global standards, they are poised to be a highly competitive source for workforce at the global stage.

Indonesians have shown resilience in facing various challenges, including natural disasters and economic fluctuations. This resilience cultivates the ability to adapt quickly to changing circumstances and navigate uncertainties, traits that are highly valued in the global job market.

**Based on The Ministry of Home Affairs, 2022*



INDONESIAN CHARACTERS

- ✓ Culturally diverse and adaptable
- ✓ Strong work ethic, dilligent, polite
- ✓ Increased numbers of
- ✓ English proficiency
- ✓ Technological aptitude
- ✓ Entrepreneurial spirit
- ✓ Resilience

A large group of approximately 50 people, including men, women, and children, are posing for a group photo on a green lawn. They are arranged in several rows, with some sitting on the grass in the front and others standing behind. The group is diverse in age and attire, with many wearing casual clothing and some wearing head coverings like hijabs. In the background, a large, modern sculpture made of polished metal beams radiates from a central point, creating a star-like shape against a clear blue sky with some light clouds. The sculpture's beams are angled upwards, and the group is positioned at its base.

Bonus
demography:

70%

of population belong
to the Productive Age
category

Our Vision & Mission

Binawan aims to be the catalyst for Indonesia's workforce development, empowering individuals to succeed internationally while contributing to the country's overall growth and prosperity.



» Vision

To be the leading company in Indonesia, empowering and developing the country's manpower to excel globally, while fostering sustainable partnerships with international employers.

» Mission

Manpower Development:

To provide comprehensive education, training, and skill enhancement programs to individuals, equipping them with the necessary expertise, language proficiency, and cultural adaptability required to work abroad successfully.

Global Placement:

To establish strategic alliances with international organizations, businesses, and recruitment agencies, facilitating the placement of Indonesian talent in various sectors worldwide, matching their skills with global job opportunities.

Ethical Recruitment:

To uphold the highest standards of ethical recruitment practices, ensuring fair treatment, protection of rights, and equal opportunities for all individuals seeking employment abroad.

Holistic Support:

To offer comprehensive support services to our candidates, including pre-departure orientation, documentation assistance, cultural integration guidance, and continuous support throughout their overseas employment journey.

Collaboration with Institutions:

To collaborate with educational institutions, vocational training centers, and government agencies to bridge the skills gap and create tailored programs that align with industry demands, thereby increasing the employability of Indonesian workforce globally.

Continuous Learning and Innovation:

To foster a culture of continuous learning and innovation within our organization, staying abreast of evolving industry trends, technological advancements, and market demands. This enables us to deliver cutting-edge solutions and provide valuable insights to our clients and candidates.

Socioeconomic Impact:

To contribute to Indonesia's socioeconomic development by not only facilitating job placements abroad but also promoting the remittance of foreign exchange earnings, supporting families, and fostering economic growth within local communities.

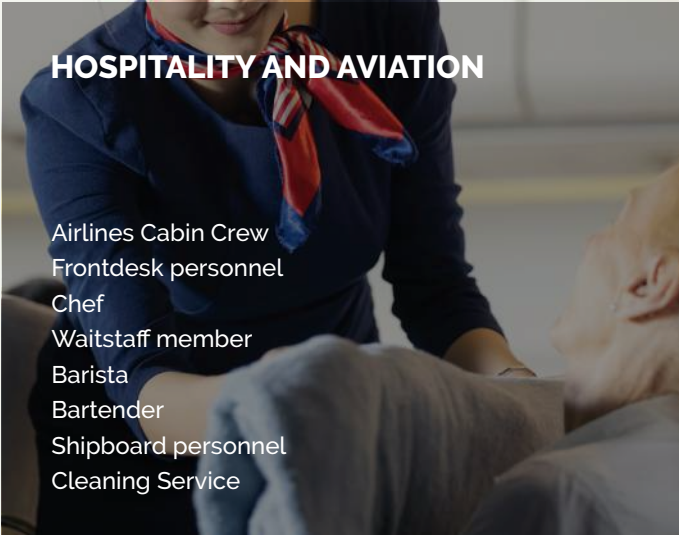
Corporate Social Responsibility:

To actively engage in corporate social responsibility initiatives, focusing on community development, education, and sustainable livelihood programs, thereby creating a positive and lasting impact on society.

Our Sectors

Binawan Group has been recruiting and developing qualified talents across Indonesia and placing them in a wide variety of sectors for job opportunities across the globe. These sectors can be categorized as follows:

HOSPITALITY AND AVIATION



- Airlines Cabin Crew
- Frontdesk personnel
- Chef
- Waitstaff member
- Barista
- Bartender
- Shipboard personnel
- Cleaning Service

HEALTHCARE




- Registered Nurse
- Enrolled Nurse
- Careworker/Community Care Assistant
- Emergency Medical Technician
- Midwife
- Physiotherapist
- Lab Technician
- Radiologist
- Pharmacist
- Nutritionist

INFORMATION TECHNOLOGY




- Network Administrator and Engineer
- Data Center Operator
- IT Operations Technician
- CCTV and Security System Technician
- IoT Engineer and Technician
- POS Systems Technician
- Audiovisual and Multimedia Technician
- Telecommunications Technician
- Cloud Architect/engineer

AGRICULTURE



- Plantation Worker
- Fruit & Vegetable Packer
- Harvester
- Greenhouse Operator
- Sorter
- Nursery Worker

BINAWAN CONSTRUCTION & OTHER INDUSTRIES



- Oil & Gas
- Roads & Highways
- Fabrication & Erection Electronics
- Garment & Textiles
- Power Plants
- Automotive



United Kingdom

55

The Netherlands

600

40

Kuwait

810

60

Saudi Arabia

1720

657

430

UAE

50

70

Qatar

530

WORKER PLACEMENT

- ▲ Healthcare
- ▲ Aviation, Hospitality, and Service
- ▲ Construction, Industry, and Agriculture



Why Choose Binawan?

"By partnering with Binawan, international employers gain access to a pioneer in the industry, a vast pool of qualified professionals, a proven track record of successful placements, and the assurance of strong official support. This makes Binawan the ideal choice for international employers seeking reliable and high-quality talent from Indonesia."



01. The Complete Ecosystem at Binawan Group



“

We strongly believe in the importance of education and manpower development as the foundation for sustainable growth and success.

Binawan University and **Binawan Training Center** were established with the primary objective of ensuring the alignment of Indonesian talents with the accepted standards of the destination countries. We strongly believe in the importance of education and manpower development as the foundation for sustainable growth and success.

Through these institutions, we offer comprehensive educational and training programs that equip individuals with the necessary skills and knowledge to excel in their respective fields. Moreover, **our on-job training programs** are customized to meet the specific requirements of our clients, ensuring that the talents we provide are well-prepared and capable of meeting their organizational needs.

By embracing digitalization, **Binawan Group also facilitates international recruitment** service through our digital platform - **JobsHub**. This platform seamlessly connects our database of talents with prospective employers, ensuring an effective and efficient recruitment process.

Leveraging advanced algorithms and intelligent matching systems, JobsHub facilitates precise talent-employer matchmaking, real-time communication, document management, and feedback mechanisms for seamless collaboration and eliminating geographical barriers.



02. Pioneer in The Industry with Strong Official Support in Indonesia



“

Binawan Group enjoys strong official support from key governmental bodies such as **The Ministry of Health, The Ministry of Manpower, and The Ministry of Foreign Affairs**

With over **40 years of experience**, Binawan Group stands as the pioneer in the manpower industry in Indonesia. Throughout its impressive journey, Binawan has built a reputation for excellence, boasting a proven track record of **successfully placing over 100,000 skilled workers** in various countries across the globe.

This remarkable achievement is a testament to Binawan's commitment to providing high-quality talent solutions. As a **licensed Manpower Agency in Indonesia**, we take care all the legal requirements in accordance to Indonesian legal law and regulations to ensure that you can conduct your recruitment safely.

We have the expertise in determining the suitable processes that need to be taken in accordance with each destination countries' regulative frameworks. Furthermore, Binawan Group enjoys **strong official support** from key governmental bodies such as the **Ministry of Health, the Ministry of Manpower, and the Ministry of Foreign Affairs**.

This official backing reflects the trust and confidence placed in Binawan's expertise and ethical practices, making it the preferred choice for international employers seeking reliable and well-supported manpower solutions from Indonesia.

“



Dr. Hj. Ida Fauziyah, M. Si

Minister of Manpower of the Republic of Indonesia

"All of you are ambassadors of the nation. Work with gratitude so that all of you can reflect the image of the Indonesian nation as a great nation, a polite nation, a nation that obeys rules, and a nation that excels in human resources. Take care of your self-esteem and also the honor of the Indonesian nation.

I, as the representative of the Government of the Republic of Indonesia, appreciate the mutually beneficial cooperation that has been forged by the Binawan Group with the Kingdom of Saudi Arabia."

“



H.E. Mr. Abdulwahab Abdullah Al Sager

The Kuwait Ambassador to Indonesia

I would like to assure all of you that the State of Kuwait is keen to develop the strengthening and relationship with the Republic of Indonesian in all fields. And we are here to encourage the bilateral relation between the two countries in terms of sending trained medical personnels who will work as nurses with different specializations in many hospitals in the state of Kuwait.

I would like to express my aspiration that this will be the first batch of many future batches of Indonesian nurses which will cover the increasing demand of healthcare jobs in the State of Kuwait.

Wishing the strong relationship between many hospitals in the State of Kuwait and Binawan Group, to be a model, a wonderful and successful partnership of mutual interest between the State of Kuwait and the Republic of Indonesia in the public or private sector.

“



Emanuel Melkiades Laka Lena

Vice Chairman Commission IX of the People's Representative Council of the Republic of Indonesia

This is an extraordinary work that has been done by the Binawan Group. During this difficult time, Binawan was able to carry out this important program and was able to produce and prepare nurses and at the same time opened up for them to go to Kuwait.

We must increase this opportunity.

We bring this good story to our friends at other Commission IX and our various partners at the Ministry of Manpower and the Indonesian Migrant Workers Protection Agency (BP2MI) and other related parties.

This gives us optimism that we can still work and make positive things in pandemic. Once again our appreciation, Commission IX DPR RI is grateful for what has been done by the Binawan Group and our respect for the departing nurses. The Indonesian Embassy in Kuwait will definitely support friends in Kuwait. Hopefully the nurses will become a VVIP after returning to Indonesia.

03. Binawan's Ethical Commitment to International Recruitment Practices



“

We are dedicated to responsible and ethical recruitment practices. We rigorously follow International codes of practice.

At Binawan Group, we are dedicated to responsible and ethical recruitment practices. We rigorously follow international codes of practice and never engage in recruitment from countries on the red list. Our pre-employment screening process includes criminal background and visa checks to ensure that all international personnel meet necessary standards.

At Binawan Group, we take pride in our ethical approach to international recruitment and are committed to providing the highest quality services to both our clients and personnel. By adhering to these principles, we are able to maintain a positive reputation in the industry and build strong relationships with those we serve.

We also provide comprehensive training and induction programs to support our personnel and ensure they have the necessary skills and knowledge to succeed. Our commitment to ethical recruitment practices extends to not charging fees, promoting transparency in our activities, and monitoring the impact of our recruitment.

“



Shinya Kuwayama

President AOTS Japan

I'm very happy with the agreement between Japan and Indonesia. We have been implementing this program for more than 15 years, there were reasons the Training of Trainers for healthcare program like caregiver in accordance with Japanese standards. We also hope that based on our cooperation, we will start a new project to increase the support for the development of Indonesians working in Japan together with Binawan.

“



Mr. Mazin E Saba

Senior Specialist IFS, Saudi Airlines

Delighted with Binawan recruitment agency and has been a pleasure to work with Professional, Committed, and knowledgeable. Impressed with the goodwill, comfort, and great hospitality like we are family expressed by everyone I've interacted with.

Constantly improving and developing. anticipated a better service more to be one of the best from the well-known agency. Thank you and Good Luck!



BINAWAN
Healthcare







Binawan Healthcare

Empowering Healthcare Professionals for Global Opportunities

Binawan Group has been an esteemed ecosystem providing high-quality education and training for healthcare professionals for several decades. In recent years, the demand for healthcare professionals has been soaring, with nursing playing a crucial role in the healthcare sector. Each year, over 100,000 new nurses graduate in Indonesia, with a cumulative total of 1,052,032 registered nurses*.

Binawan's Commitment to Global Placement:

Since 1993, Binawan has successfully facilitated the overseas deployment of over 3000+ healthcare professionals. By providing comprehensive education, training, and facilitating overseas placements, Binawan Healthcare continues to play a pivotal role in advancing the healthcare sector in Indonesia and contributing to the success of healthcare professionals worldwide.

**Data based on the Indonesian Health Workforce Council.*

Each year, over
100,000 new nurses
graduate in Indonesia,
with a cumulative total of
1,052,032
registered nurses*.

Binawan has
successfully
facilitated the
overseas
deployment of over
3000+
healthcare
professionals



The **Indonesian** healthcare community network
established by **Binawan Foundation**

SK No.001/SK/KETUA/YAYASAN-BIN/II/2000



"IHTP Indonesia tries to develop all of the domestic health professional potentials by building bridges to all quality healthcare sectors overseas so that it could bring mutual benefit through collaboration with the global healthcare community"

International Healthcare Training Program (IHTP)

“

Dr. Georg Petersen

Former WHO Representative
for Indonesia

"IHTP as a nonprofit organization is an important initiative in building health sector capacity in Indonesia. I hope IHTP could succeed in its missions in improving infrastructure and human resources in the health sector in Indonesia".



One of IHTP missions is an education and training of health professionals, The mission is embodied in the form of a Memorandum of Understanding (MoU) with well-known Governments, Universities, Healthcare institutions, associations, and healthcare professionals in Indonesia and overseas, including:

Stakeholders

Domestic



- Ministries and national institutions**
- Coordinating Ministries for Maritimes and Investment Affairs
 - Ministry of Manpower
 - Ministry of Health
 - Ministry of Finance
 - Ministry of Foreign Affairs
 - Directorate General of Immigration, Ministry of Law and Human Rights
 - Indonesian Migrant Workers Protection Agency



Province / Regency/ City Governments



Health Education Associations



Health Workers Associations



Healthcare Institutions



Health Education Institutions



Training institutions



Overseas Placement Services



Financial and Banking Institutions



Health Professionals



Foreign Embassies

Overseas



Ministry of Health of the destination countries



Universities, Colleges, dan Training Institutions



Healthcare Institutions



Financial Institutions



Employment Agencies



International Certification Institutes



Professional Associations in the placement destination countries



International Organizations



Mr. Fahd Baraba

National Ambulance Stakeholder Relations Manager

We believe that through the strong partnership between National Ambulance UAE and Binawan in the field of emergency medical services and the provision of emergency medical personnel, we will be able to provide quality pre-hospital medical services for the people of the UAE in line with the nation's local licaldicare objectives, working with both government and private sectors.



Mr. Benny Rhamdani

Head of The Indonesian Migrant Worker Protection Agency (BP2MI)

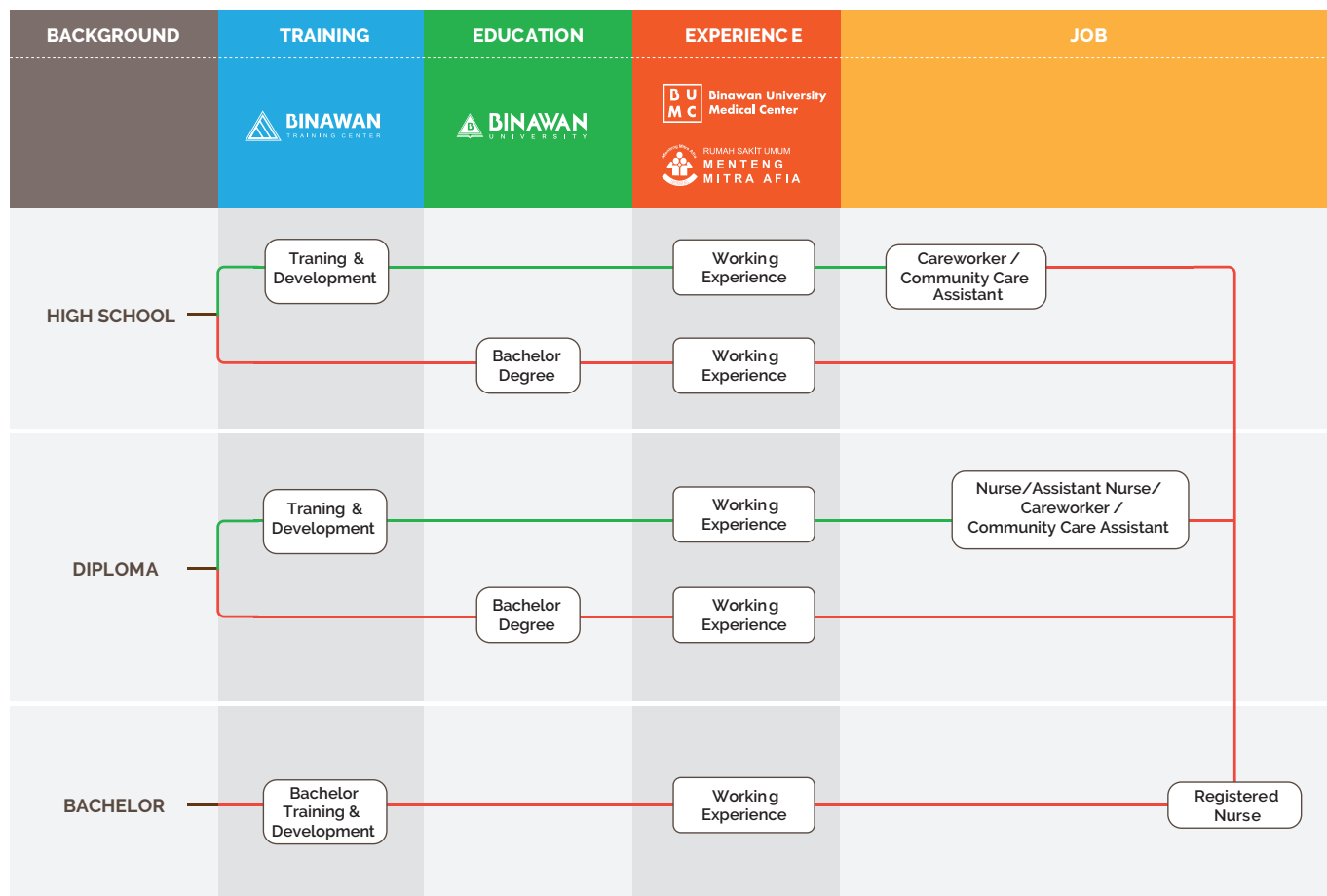
"Indonesian nurses can transfer knowledge when working abroad, for nurses in this sector, we have worked together with Binawan, We will continue to support them because we can't work alone, we need Binawan to build Indonesia and the nation's children to work abroad. Appreciation and gratitude to Binawan who has saved the nation's children to working abroad and saving the dreams of the nation's children, and this is not the first time that Binawan has departed."

Global Healthcare Career Pathways:

Multi-Entry Multi-Exit Framework to Working Abroad

Binawan has developed a multi-entry, multi-exit pathways to working abroad, allowing us to accomodate Indonesian healthcare professionals from various levels of educational background to reach the same goal.

Pathways for Nursing



For opportunities requiring work experience, Binawan Group offers **Professional Year Program** in affiliated and and partner hospitals and clinics in tandem with Binawan University and Binawan Training Center.

— High School & Diploma Pathways
— Bachelor Pathways

What Makes Binawan Different?

Binawan has sent more than 2700 healthcare professionals abroad

Our international cooperation has covered and based on different agreements such as Private to Private, University to University, and Government to Government.



01. Strong Network of Strategic Partnerships

Our extensive network includes collaborations with **private institutions**, ensuring a diverse range of resources and expertise. Moreover, we have garnered **endorsements from multiple ministries in Indonesia**, solidifying our official support and recognition.

Furthermore, Binawan has successfully served as a **valued partner and collaborator for international embassies**, contributing to their country's manpower requirements and fostering mutually beneficial relationships. Additionally, our associations with esteemed **local and international academic institutions and universities**, reinforce our commitment to excellence in education and training. These strategic partnerships enhance our capabilities and enable us to deliver exceptional results for our clients and stakeholders.

“

H.E. Lena Maryana Mukti

The Indonesian Ambassador of Kuwait

The potential of the nurses and technicians in Kuwait is very high, especially many new hospitals are built by the government. During the pandemic, we're still receiving demand from the government of Kuwait and also the private hospitals, of nurse and technicians.

From July 2021 to February 2022, about 315 nurses and technicians are requested by the private hospitals in Kuwait. And most of them are fulfilled by Binawan. We look forward to Binawan and other agencies being able to fulfill the demand of nurses here in Kuwait in the near future.

In terms of the Indonesian government, we would like to encourage you to make an MOU as simple as possible between the agencies of the two countries because we don't want the placement to be postponed or delayed because of the long bureaucracy.

Our clients are our partners and priority

International Partners

SAUDI ARABIA



KUWAIT



AUSTRALIA



AMERICA



SINGAPORE



JAPAN



UNITED KINGDOM



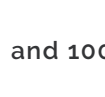
Domestic Partner

GOVERNMENT & ASSOCIATIONS



and 15 more

EDUCATION INSTITUTIONS



and 100 more

HEALTHCARE FACILITIES



Binawan University Medical Center

and 28 more

02. A Leader in The Field

As a pioneering force in the industry, Binawan Group has solidified its position as a trusted leader with over **40 years of experience in the field of manpower development**. Our track record speaks for itself, as we have successfully **placed more than 3000 highly skilled healthcare professionals** in various countries across the globe.

With our extensive experience and deep understanding of the global healthcare landscape, Binawan Group continues to lead the way in empowering healthcare professionals for successful placements worldwide.

03. Commitment to Excellence

Binawan Group's unwavering commitment to excellence is demonstrated through the creation of a **comprehensive ecosystem for manpower development and supply**. We have established ourselves as leaders in the industry by **continuously innovating and staying ahead of the curve** through the development of JobsHub, our cutting-edge digital platform that streamlines the recruitment process and connects qualified professionals with global opportunities.

Furthermore, our advanced recruitment processes ensure that only the most skilled and suitable candidates are selected for placement abroad. As part of our commitment to continuous improvement, we are **constantly expanding our training centers** to provide the highest quality education and skill development programs. Importantly, when individuals join Binawan for training or study, they can expect **overseas work placement opportunities as part of the comprehensive package**.

04. Comprehensive Healthcare Manpower Ecosystem



Our Comprehensive Ecosystem

Career Laddering: A career ladder is a series of connected skills and education training programs that can help to advance in the healthcare field

BINAWAN TRAINING CENTER (BTC)

Binawan Training Center (BTC) organizes itself a service-based professional training center. By having instructors who have national and international scale certifications

BTC aims to equip Indonesian job-seekers with International standard skills and competencies that enables them to access the global job market

» International Registered Nurse

Becoming a Registered Nurse can also be your first step toward a career in healthcare administration, nursing education, or becoming a nurse practitioner.

In this program, we prepare candidates for any required requirements given by users, such as licensing exam preparation classes, medical English, and also soft skills programs. We ensure that candidates are well-equipped and ready for their future careers anywhere in the world.

“



Susi Suretno

Registered Nurse at Canterbury Hospital, Sydney Australia

I'm working in the surgery unit in Canterbury Hospital in Sydney, Australia. I joined Binawan in 2002 and came to Australia in 2005 and Binawan has helped a lot in nursing especially nursing in Indonesia. See the difference and make a difference as well for nursing in Indonesia.



ONLINE OR OFFLINE CLASS

Facilities

Classroom and LMS

Duration

20 sessions/Month | 90 minutes/day

Review programs for licensure examinations

1. NCLEX-RN (National Council Licensure Examination- Registered Nurse)
2. SNLE (Saudi Nursing Licence Examination)
3. SNB (Singapore Nursing Board)
4. DOH-RN (Department of Health - Registered Nurse)
5. DHA-RN (Dubai Health Authority - Registered Nurse) + and more

» Caregiver | Community Care Assistant | Personal Support Worker

Provide nursing services for individuals, families, and groups in a variety of settings.

This program is designed to equip trainees with the skills and certification to be able to perform social care and adult care duties in various settings, including Healthcare Assistants in Hospitals and Nursing Homes and Community-based Care.

Our training modules are benchmarked to various countries' standards to ensure the skills are suitable to each country's requirements. This is a 2-months long intensive program's that includes theory, lab, and field practice.

“



Cindy Olivia

Community Care Assistant in the United Kingdom

"I graduated from Binawan in 2010. Right now I work in The United Kingdom as a community care assistant and then I am really thankful for Binawan to help us, have the opportunity to come and work here, if you want to have a bigger opportunity, especially as a nurse, you can join Binawan and then have to work abroad"



BLENDED LEARNING

Facilities

Laboratories | Field | Classroom | LMS

Duration

20 sessions/Month | 90 minutes/day

Level

Basic | Intermediate | Advance

Caregiver skills and language | Caregiver Support Services Training - Preventing the Spread on Infection | Understanding Medication for Caregivers and more

» Emergency Medical Technician (EMT)

Attendants give emergency medical care to people with injuries or illnesses and transport them to hospitals or other medical facilities for further care.

Binawan Training Center collaborates with the AREMT, National Ambulance of the UAE, and Emergency Ambulance (AGD 118) in Indonesia in organizing training and licensing examination reviews for candidates to become Emergency Medical Technicians (EMT). The training process lasts for approximately 3 months (including theory, lab, and field practice).

“



Yanti Kartina

EMTs in the United Arab Emirates

For this process, I was greatly assisted by Binawan. I was given good training and preparation as well as given knowledge about EMT, for a month preparing for skills, tricks, user interviews, and cognitive tests



BLENDED LEARNING

Facilities

Laboratories | Field | Classroom | LMS

Level of certification

(EMT-Basic and EMT-Intermediate)
Completion of an AREMT accredited EMT training program

Choosing A Health Career, skills and abilities are in demand



BINAWAN UNIVERSITY

Pathways To International Health Careers Program

In line with the globalization issues faced by Indonesia and with increasing demands for higher quality health services, Binawan seeks to reform the education system to produce qualified healthcare professionals with international standards that are capable of working worldwide.

The internationally standardized curriculum is used with a total of 144 credits for eight semesters, starting from the second semester, students will be joining the working holiday visa (WHV) program in Germany and Australia, and after graduating from this program, Binawan University will facilitate graduates to take the international license test, therefore will be eligible to work abroad.

As a university with health-related programs, our campus is equipped with numerous facilities. We have different types of laboratories to support students' learning processes and carry a wide range of research. We also have clinics and hospitals that provide holistic health services for students and the public. Students have the opportunity to intern at our clinics or hospital.



Anna Glyn

Nursing Manager of the Orthopedic at
Bankstown Hospital, Sydney Australia

Hi my name is Anna Glyn I'm the Nursing
Unit Manager of the Orthopedic at
Bankstown Hospital in Sydney Australia.

I have one of your ex students from
Binawan, working here as a registered
nurse, he's worked here for a few years
now and over the time I found him to
be a wonderful kind and caring nurse
with excellent clinical skills he has good
knowledge which he shares with others
and he also communicates very well
with the patients and all the members
of the healthcare team I'd really like
to thank the Binawan University for
the training that you provided which
really has contributed positively to the
wonderful nurse.

Have a look at some of the most popular programs:

- Bachelor of Nursing
- Bachelor of Midwifery
- Bachelor of Pharmacy
- Bachelor of Psychology
- Bachelor of Nutrition
- Bachelor of Social Welfare (Medical)
- Bachelor of Management (Hospital Management)
- Applied Bachelor of Occupational Health & Safety
- Applied Bachelor of Physiotherapy
- Applied Bachelor of Medical, Laboratory & Technology
- Master of Public Health
- Master of Nursing (coming soon in 2024)

» Learning support

Our university is readied with eight laboratories in order to perform one of our missions, knowledge development. The laboratories we currently manage are the nursing and midwifery laboratory, physiotherapy laboratory, medical laboratory, nutritional laboratory, occupational health and safety laboratory, pharmaceutical laboratory, psychology laboratory, and social welfare laboratory.



- 01. Pathology Laboratorium
- 02. NERS/Nursing Laboratorium
- 03. Physioteraphy Laboratorium
- 04. Pharmacy Laboratorium
- 05. Microbiology Laboratorium
- 06. Nutrition Laboratorium
- 07. Midwifery Laboratorium
- 08. Computer Laboratorium

» Educational Partners



Monash University



Niagara Collage Canada



Macquarie University



Manav Racha
Vidyanatariksha



University of Sharjah



Humber University



Management & Science University



University of Technology, Sydney



Asia University



Polytechnic University
of the Philippines San Pedro



Rajasthan Vidyapeeth University



Asia University

The Best Learning Experience in Our **HEALTHCARE FACILITIES**

Our network of partners and affiliated healthcare providers under Binawan Group ensures the standard and quality of the Field Practice exposure to our students

Internships in hospitals or clinics offer nursing students a dynamic learning experience, allowing them to acquire essential clinical skills, develop professional relationships, and gain exposure to the realities of working in a healthcare setting. It is an essential component of nursing education that prepares students for their future roles as competent and compassionate healthcare providers.

Binawan Healthcare Facilities:

1. Menteng Mitra Afia Hospital, Jakarta
2. Binawan University Medical Center (BUMC), Jakarta
3. Afia & Darussyifa Clinic, Jakarta
4. Nurtura Aesthetic and Wellness, Jakarta



01. Menteng Mitra Afia Hospital, Jakarta
02. Binawan University Medical Center (BUMC), Jakarta
03. Nurtura Aesthetic and Wellness, Jakarta



BINAWAN

Hospitality & Aviation







What We Offer for Professional Hospitality?

Our company is built on a foundation of professionalism, integrity, honesty, and a genuine passion for hospitality. We are dedicated to empowering individuals with the knowledge, skills, and mindset required for success in the hospitality industry.

Careers:

Flight Attendant

Chef

Barista

Waiter

Reception/Frontliner

Retail

Cruises



“



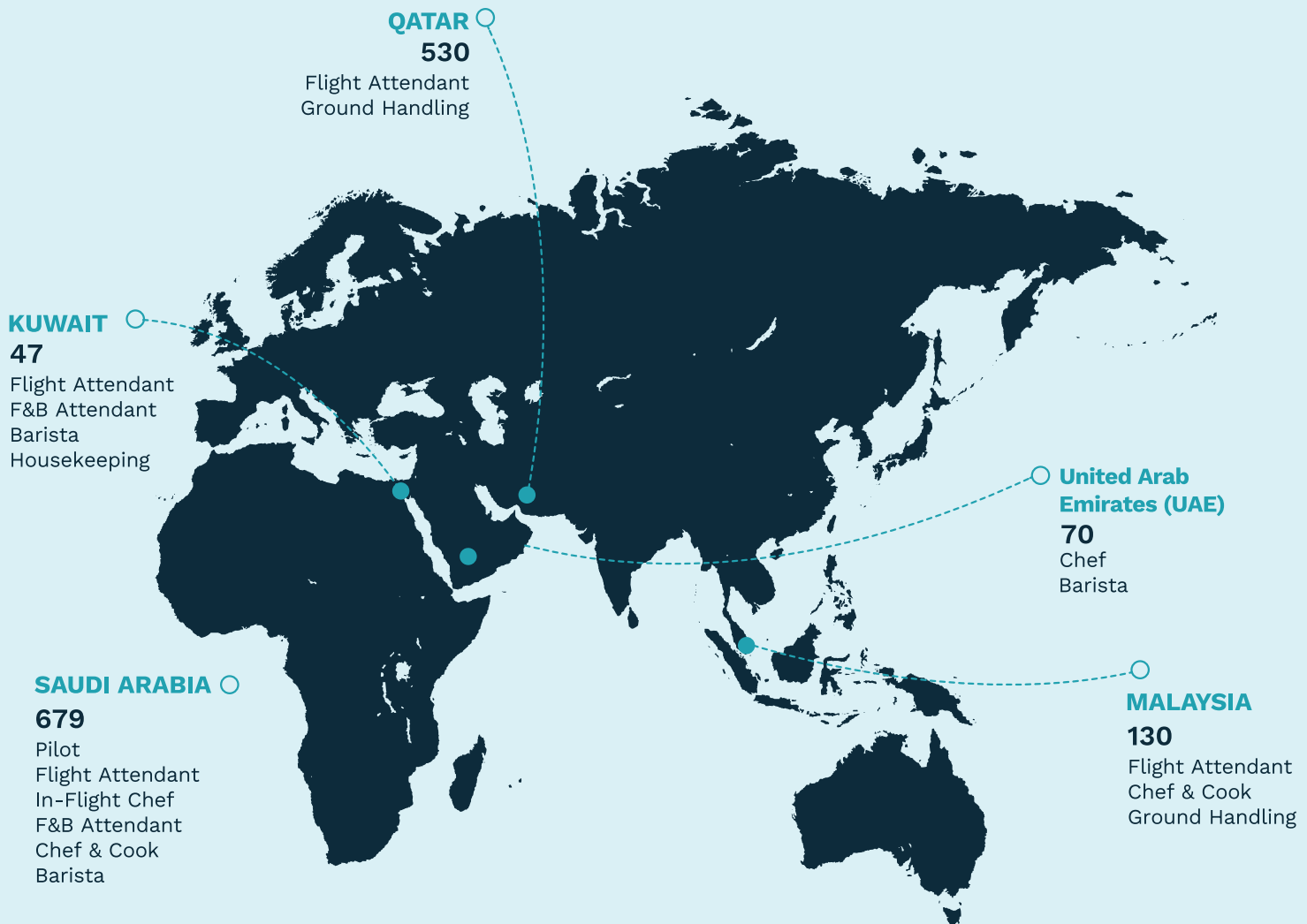
Mrs. Uchira Putri

Recruitment Specialist at FlyaDeal

Horrendously glad and blessed to work with professional, supportive, yer thoughtful Binawan. Looking forward to see you in the nearest future

What Makes Binawan Different?

Binawan Group offers a holistic ecosystem for education, training, development, and recruitment of hospitality workers and professionals from across Indonesia. With more than 40 years experience in the manpower industry, together with our partners, we continually provide jobs and opportunities.



International Partners





Aviation

Binawan International Cabin Crew Academy

World Class Academy for World Class Airlines

BICCA is dedicated to nurturing students, equipping them with comprehensive aviation skills and knowledge, thereby transforming them into outstanding individuals poised for success as international airline cabin crew members. The training program is taught by a facilitator with 20+ years of experience in aviation, ensuring a comprehensive and expert-led learning experience.

BICCA FACILITIES

The training program covers a wide range of areas, including passenger safety and emergency procedures, impeccable customer service, effective communication, and conflict resolution. Cabin crew are expected to develop the ability to handle diverse cultural backgrounds and deliver personalized service to create a memorable flying experience. Our goal is to prepare them to be professional, adaptable, and efficient, ensuring they are well-prepared to meet the demands of the ever-evolving aviation industry.



1. *Airplane Mockup Service*
2. *Fully Air Conditioned with Complimentary Wi-Fi*
3. *Beauty Classroom*
4. *Prime Location*

Duration

2,5 Months

Key Course Program

General Safety | Aviation Knowledge | Aviation Security | Aviation Medical Knowledge | Dangerous Goods | Crew Resources Management | General Cabin Services Knowledge

Enrichment Program

Personal Beauty Class Experience | Developing Self Image & Positive Mindset | Social and Business Etiquette | Service Communication | Handling Complaint & Service Recovery | Hospitality | Understanding Different Cultures | Table Manners



Zuri
Flight Attendant at Saudi Airlines

In 2017, I discovered Binawan through a website dedicated to posting cabin crew recruitment opportunities for foreign airlines. At that time, the application process seemed quite complicated, especially since I was still occupied with my previous job. However, Binawan proved to be invaluable in guiding me through each stage of the process. They even accommodated my schedule when I couldn't attend a morning interview.

Working as a Flight Attendant for Saudi Airlines abroad provided me with numerous life lessons, particularly in learning how to interact with people of different nationalities. To me, Binawan is more than just an agency for sending workers abroad; it is my best friend. Binawan not only guided me on the do's and don'ts but also played a crucial role in helping me pursue my dreams.

Hospitality



Binawan Training Center

Binawan Intensive Course for Hospitality Programs

Binawan Training Center offers a comprehensive hospitality program aimed at developing Indonesian individuals with the necessary skills to excel in the global hospitality industry. With experienced faculty and state-of-the-art facilities, Binawan ensures graduates are equipped with both technical expertise and interpersonal skills to succeed while working overseas.



» Food & Beverages | Restaurant | Hotel Services

This program is designed to equip trainees with the culinary and hospitality skills. Intensive, 8-week to 9-month programs for Food & Beverage, culinary, and hospitality enthusiasts to accelerate their careers to the next level.



ONLINE AND OFFLINE

Minimum 4 week to 9-month

Facilities

Laboratories | Vocational Training | Classroom

Duration

90 minutes/day

Binawan Hospitality Facilities: **Al-Jazeerah Restaurant**

This hands-on training program provides participants with practical experience in a real-world hospitality setting, enabling them to apply their knowledge and skills in a dynamic environment.

Under the guidance of experienced mentors, trainees gain valuable insights into various aspects of restaurant operations, including customer service, food preparation, menu planning, and teamwork.



Address:

1. Al Jazeerah Signature Restaurant & Lounge :
Jl. Johar No.8, Kb. Sirih, Kec. Menteng, Kota Jakarta Pusat
2. Al Jazeerah Signature Bandung :
Jl. Ternate No.3, Citarum, Bandung
3. Al Jazeerah Signature, Bali :
Jl. Sunset Road 89, Seminyak, Bali



Testimony



Natalie
Toraja Indonesia

Cabin Service Assistant Saudi Airlines

For all my friends, who want to work abroad, I suggest that if you have any interest, especially in the service industry, or aviation you can try to apply in Binawan. This is a collaboration with Saudia Arabia Airlines and Binawan. You can apply there. Binawan helps from registration to preparation for user interviews. There are also other jobs besides cabin crew, like healthcare and hospitality



Mr. Sultan

Saudi Airlines Recruitment

For us, I will explain how was our experience with Binawan it was a pleasant experience, it was an amazing experience, I have never find any difficulties while we are conducting our job as a recruitment team, we find out everything is available which make us focus on conducting our job and whatever we were asking about immediately we can find it through the amazing team in Binawan, the amazing team they really provided for us immediately without any hesitation, I wish all the team that are in Binawan succeed and we really love you guys!







BINAWAN AGRICULTURE

Agriculture as a source of sustainable community

Binawan Agro is a unit that carries out agriculture-related business under the Binawan Foundation. The business unit started its operation in 2021 and implement precision in agriculture and modern-day farming practices through greenhouse farming operations. Our greenhouse facilities are located and operate in several areas.

Our goal is to positively enrich the abundance of rural potential in Indonesia and empower the livelihoods of people and communities we engage with, especially the young generation, to grow and get the economic welfare by optimizing their potentials.





What Makes Binawan Different?

Integrated agricultural training and production farm Binawan agro was built with the main direction as integrated agricultural training for the placement of workers abroad. Bringing a natural learning space that produces quality agricultural products with very diverse varieties. Thus, not only as a place for training, Binawan Agro is able to become a place for active production of varieties.

We collaborate closely with Institut Pertanian Bogor (IPB) - the largest and most prestigious State Agricultural Institute in Indonesia - to fully support this program by tailoring our training modules and providing instructors.

Our Partners





Binawan Helping you Grow for Agriculture Sector

On BTC's Agriculture Training Program, students will learn to improve precision in agriculture and modern-day farming practices through greenhouse farming operation. Our on-site Greenhouse Facilities also helps to strengthen their new practical techniques and boost their confidence. This program is often complemented with Specific Purpose Language Programs to familiarize the students with the workplace jargon of their destination country.

Training & Development

» **Plantation worker | Fruit & Vegetable Packer | Harvester
| Greenhouse Operator | Sorter | Nursery Worker**

These courses are designed to prepare you for the challenges that you will face while working in the agriculture industries.

BINAWAN FACILITIES

Classroom Learning | Laboratory Practice | On-Site Practice | 10 Greenhouses | Dormitory

Capacity:
60 Students



Our Activities and Program, Help you to Meet your Business Goals



01.

Training

Supporting places to train prospective candidates who will be placed abroad as expert workers in the field of agriculture. The environment, commodities and technology applied in our agricultural system are adapt to the needs of the country of placement.

02.

Seed Selection and Treatment

Agro training starts with selecting high-quality seeds suitable for the intended crop. Factors like germination rate, disease resistance, and growth characteristics are considered

03.

Nursery Management

In the nursery phase, seeds are germinated and grown into seedlings before being transplanted to the main field or greenhouse. Agro training covers activities such as seedbed preparation, sowing techniques, and optimal environmental conditions (temperature, humidity, light) for seed germination and seedling growth



04.

Transplanting to Greenhouse

Once the seedlings reach a suitable stage, they are transplanted to a greenhouse for further growth. Agro training includes guidance on greenhouse management, such as maintaining optimal temperature, humidity, ventilation, and lighting conditions to create an ideal microclimate for plant growth. Techniques like drip irrigation or fertigation (fertilizer application through irrigation) may be taught to ensure efficient nutrient delivery.

05.

Greenhouse Farming

Production of various commodities, that are not only used of supply internal needs in the Binawan Group but also for commercial needs. Our commodities are also not limited to local varieties but also from abroad varieties that enrich our range of product.

06.

Harvesting and Post-Harvest Handling

As the crops mature in the greenhouse, the harvesting process begins. Agro training covers the proper techniques for harvesting greenhouse-grown produce, considering factors such as crop type, maturity indicators, and handling protocols to minimize damage. Following harvesting,

Post-harvest handling practices, including cleaning, sorting, grading, and packaging, are carried out as mentioned earlier.

07.

Family Welfare Improvement Program

Greenhouse assistance and financing programs for the families of workers who are placed to work abroad. This program is expected to be a source of additional income during placement and after placement for the family member.



How We Operate

Collaboration

We strive to connect young generation - small scale farmers to share knowledge, resources and grow together. Therefore, we encourage partnership, volunteerism, and mentorship among the stakeholders along the value chain of the farm products.

Development

As agriculture is constantly evolving, we want to meet the challenges of a changing world by promoting continual education and training to build on our talents and develop new skills on the best use of available resources among members of the value chain.

Advocacy

The best way to help people understand the role in agriculture and the life sciences is to share information. We equip our members to be advocates of our business and ensure members receive sustainable income from the best farming practice, which encourages food security.





Welcome to Binawan Information Technology

As part of Binawan Group, Binawan Information Technology - Techub carry a common mission of facilitating international opportunities for IT professionals, particularly in the areas of workforce development and placement. As a business unit, Techub is Digital Enabler, an inclusive solution for integrated digital and technology ecosystems.

We bring technologies and digital transformation closer on a daily basis—Change-maker for a better digital environment with continuous impact. Creating solutive impact for Business through digitalization by enhance all the cross-cutting factors, from the placement of human resource with outstanding skills to the implementation of technology itself.



Why Indonesian Could Be The Answer for Global Tech Talent War?

With the increasing number of IT talents in Indonesia, reaching up to 600,000 new talents annually, we have full confidence in deploying a substantial pool of skilled Indonesian IT professionals abroad, showcasing their competitive skills, knowledge, and exemplary behavior. Apart from the quantity, several conditions and factors contribute to the competitiveness of Indonesian IT talent on a global scale, which include:

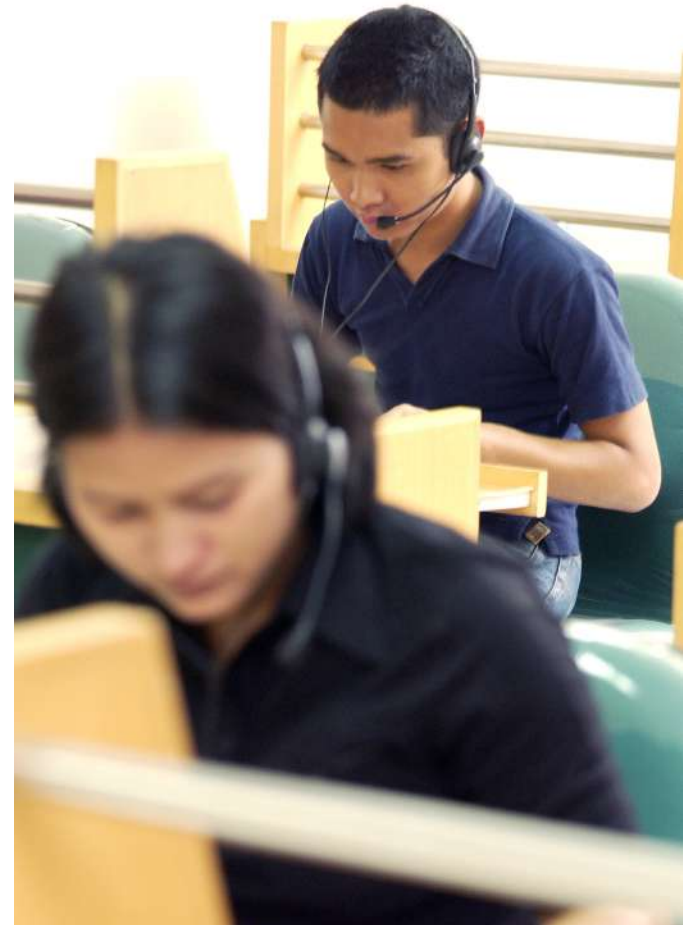
- Abundance of Tech Talent
- Diverse Tech Skill Sets and Competencies
- The Rising Number and Variety of Access to Tech Skills Learning
- Tech Ecosystem Growth, Unlimited Doors for Tech Experience
- Foreign Language Proficiency
- High Cultural Adaptability and Openness

What We Offer for Professional IT?

Human resources are an important key enabler when a company wants to pave the way for growth, including talent in the IT field. Not only to improve internal processes but also to open innovation opportunities that will bring added value to the company.

By customizing various skill development programs, we are well-prepared to provide competent talents for international placements. Here are our IT professionals who are ready to be part of your company's success journey :

1. Network Administrator and Engineer
2. Data Center Operator
3. IT Operations Technician
4. CCTV and Security System Technician
5. IoT Engineer and Technician
6. POS Systems Technician
7. Audiovisual and Multimedia Technician
8. Telecommunications Technician
9. Cloud Architect/engineer



Endorsement & Collaboration





Binawan Training Center

Training

The BTC IT Training covers various forms, methods and fields of IT Professionals with an international career orientation. Curriculum and output in the form of skill sets achieved and certifications obtained are adjusted to global standards

» Datacenter Practitioner

Within this program, we diligently prepare candidates to meet the specific criteria outlined by the DCP Standard and Uptime Institute. This includes comprehensive training in areas like Datacenter Design Awareness, Energy Professionals, and various essential soft skills programs.

Our utmost commitment is to ensure that candidates are fully equipped and poised for successful careers worldwide.



ON-SITE PRACTICE

Facilities

Laboratories | Classroom | Datacenter Site

Duration

120 minutes/day

Level

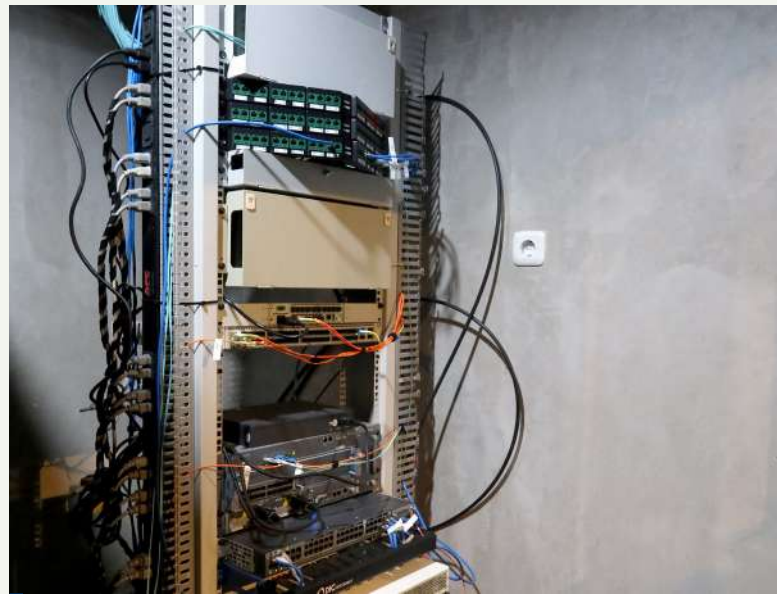
Basic | Intermediate | Advance

Completion of accredited training for Datacenter Operator
DCP®

» Network Engineer (Cisco, Juniper, Mikrotik, CompTIA, etc)

The objective of this program is to provide trainees with the necessary skills and certifications to proficiently handle network operations, including routing, switching, and more, across multiple brands and configurations.

Trainees will also be trained as NOC Assistants in Network Meet Me Room (MMR) settings. Our training modules are aligned with industry-leading brand standards to ensure the acquired skills are adaptable to any device requirements. This rigorous program spans over a duration of seven days.



ONLINE AND OFFLINE CLASS

Facilities

Laboratories | Network MMR | Site of Devices | Classroom

Duration

120 minutes/day

Level

Basic | Intermediate | Advance

Completion of accredited training for Network / Telco Specialist

CCNP, MTCRE, JNCIA etc

» International Certification for IT Professional

A program specifically designed as a pathway when trainees wish to obtain certain international standard certifications. This program can be obtained specifically according to the available field certifications or integrated with bootcamp programs and other training.

1. CompTIA A+
2. Cisco Certified Network Associate (CCNA)
3. CompTIA Security+
4. Microsoft Fundamentals
5. Amazon Web Services (AWS) Cloud Practitioner
6. CompTIA IT Fundamentals (ITF+)
7. CompTIA Network+
8. GIAC Information Security Fundamentals (GISF)
9. Google Cloud Digital Leader



ONLINE AND OFFLINE CLASS

Facilities

Laboratories | Hospital | Classroom

Duration

120 minutes/day

Level

Basic | Intermediate | Advance

» International Apprenticeship Program

In this program, participants undergo a blended experiential learning, encompassing a combination of on-the-job training activities (80%) where they engage directly in workplace interactions, and tutor-guided learning mechanisms (20%) to provide structured guidance.



ON-SITE TRAINING (ABROAD)

Facilities

Laboratories | Network MMR |
Site of Devices | Classroom

Duration

1 - 6 months

Level

On-site Training | Classroom

Datacenter, Telco & Connectivity Labs, Digital IoT Labs

Supporting Facilities

The BTC IT Training covers various forms, methods and fields of IT Professionals with an international career orientation. Curriculum and output in the form of skill sets achieved and certifications obtained are adjusted to global standards

Binawan Group supporting facilities:

1. Datahall Datacenter, Jakarta
2. Artrow Creative Studio, Jakarta
3. Techub Digital Labs, Jakarta

Strategic Partner supporting facilities :

1. MettaDC, Cibitung
2. APJII Network MMR, Indonesia
3. Antenna & Wireless Communication Lab Telkom University, Bandung

Quality Assurance & Certification Partner :

1. Uptime Institute, Singapore
2. APJII

**ENGINEERING
CONSTRUCTION
AND MANUFACTURE**





Binawan Engineering, Construction, and Manufacture

Welcome to Binawan Engineering, Construction, and Manufacture

Since 1990 Binawan has sought and selected highly qualified candidates for a wide range of positions, from skilled laborers to senior engineers, across the manufacturing, engineering, and construction sectors. With a proven track record and a vast network of international connections, we have successfully facilitated over 20,000 placements worldwide. Our commitment to excellence, industry expertise, and dedication to matching the right talent with the right opportunities sets us apart as a trusted partner for both workers and employers.

Why Indonesian Could Be The Answer for Global Talent?

Indonesia's competitive edge lies in its staggering 190 million strong workforces in the prime of their productivity, further bolstered by a remarkable 1.6 million vocational high school graduates. Their education equips them with practical skills and hands-on experience, making them not just job seekers, but job starters.

The industrial sector is the sector that currently contributes most to Indonesia's annual GDP growth. Indonesia's landscape is adorned with a multitude of international factories, exemplifying the nation's robust manufacturing sector and its pivotal role in global production networks.

We specialize in identifying and placing highly qualified professionals in key roles across various industries within manufacturing, engineering, and construction. Our extensive database and meticulous screening processes ensure that our clients receive the best talent available.



Here are our professionals who are ready to be part of your company's success journey:

Manufacturing

Production Worker/Assembler
Machine Operator:
Quality Control Inspector
Manufacturing Engineer
Maintenance Technician
Supply Chain and Logistics
Environmental Health and Safety (EHS)
Process Engineer
Quality Assurance
R&D Engineer
Welders and Fabricators
Packaging Technician

Engineering

Civil Engineering
Mechanical Engineering
Electrical Engineering
Chemical Engineering
Computer Engineering
Biomedical Engineering
Environmental Engineering
Agricultural Engineering
Chemical Process Engineering
Materials Engineering
Nuclear Engineering
Systems Engineering
Petroleum Engineering

Construction

General Laborer
Carpenter
Electrician Plumber
HVAC Technician Architect
Civil Engineer
Surveyor
Heavy Equipment Operator
Welder
Painter
Building Inspector



What Makes Binawan Different?

In a strategic move to address the burgeoning demand for skilled workers in South Korea, Binawan and the Korea Federation of Small and Medium Business – the best support organization for small businesses in Korea – have forged a formidable partnership in a landmark project. This partnership has seamlessly connected talent with global opportunities, creating a pathway to success that is both remarkable and transformative.



International Partners



Collaborations





Binawan Training Center

The BTC for manufactures training covers various forms, methods and fields of manufactures, engineering and other industries professionals with an international career pathways. Curriculum and output in the form of skill sets achieved and certifications obtained are adjusted to global standards

01 Technical Skills Development

Our technical skills development programs cover a wide range of areas, including CNC machining, quality control, product design, and CAD/CAM software proficiency. These programs are designed to equip participants with the hands-on skills required to excel in manufacturing and engineering roles.

02 Process Optimization

Efficiency is key in manufacturing and engineering. We provide training on process optimization techniques, lean manufacturing principles, Six Sigma, and other methodologies to help organizations streamline their operations and reduce waste.

03 Safety and Compliance

Safety is paramount in manufacturing and engineering environments. Our safety training programs focus on hazard identification, machine safety, OSHA compliance, and best practices to ensure a safe working environment.

04 Advanced Engineering Training

For engineers and technical professionals, we offer advanced training in specialized fields such as mechanical engineering, electrical engineering, industrial automation, and materials science. These programs deepen participants' knowledge and expertise in their respective disciplines.

05 Quality Assurance and Control

Quality is a critical aspect of manufacturing. Our quality assurance and control training covers topics such as ISO standards, statistical process control, and quality management systems to help organizations maintain high product standards.

06 Soft Skills and Leadership

Effective communication, teamwork, and leadership are crucial in these sectors. Our soft skills and leadership development programs help participants enhance their interpersonal and leadership abilities.

07 Customized Training Solutions

We understand that each manufacturing and engineering organization has unique needs. Therefore, we offer customized training solutions tailored to address specific challenges and objectives.

On-site Practice and Training

Facilities : Laboratories | Classroom • Duration: 120 minutes/day • Level: Basic | Intermediate | Advance

Binawan University to supported facilities

Universities can play a significant role in supporting industries and manufacturing sectors by providing education, training, and research initiatives that prepare students and professionals for the workforce. Here are several ways in which universities can contribute to industry and manufacturing training :

1 Curriculum Development:

- Collaborate with industry experts and organizations to design curricula that align with industry needs and standards.
- Incorporate hands-on training, internships, and real-world projects into academic programs to ensure practical skills development.

2 Skill Development Programs:

Offer certificate programs, workshops, and short courses focused on specific industry skills and technologies.

3 Research and Development (R&D):

Collaborate with industries on research projects that address challenges and innovations in manufacturing and technology.

4 Workforce Training Centers:

Establish dedicated workforce training centers within the university to provide hands-on training in manufacturing techniques, machinery operation, and safety protocols.
Offer customized training programs for industry professionals seeking to upskill or reskill.

5 Collaborative Labs and Facilities:

Provide access to state-of-the-art laboratories, testing facilities, and equipment for industry research and development projects. Allow industries to use university facilities for prototyping, testing, and product development.

